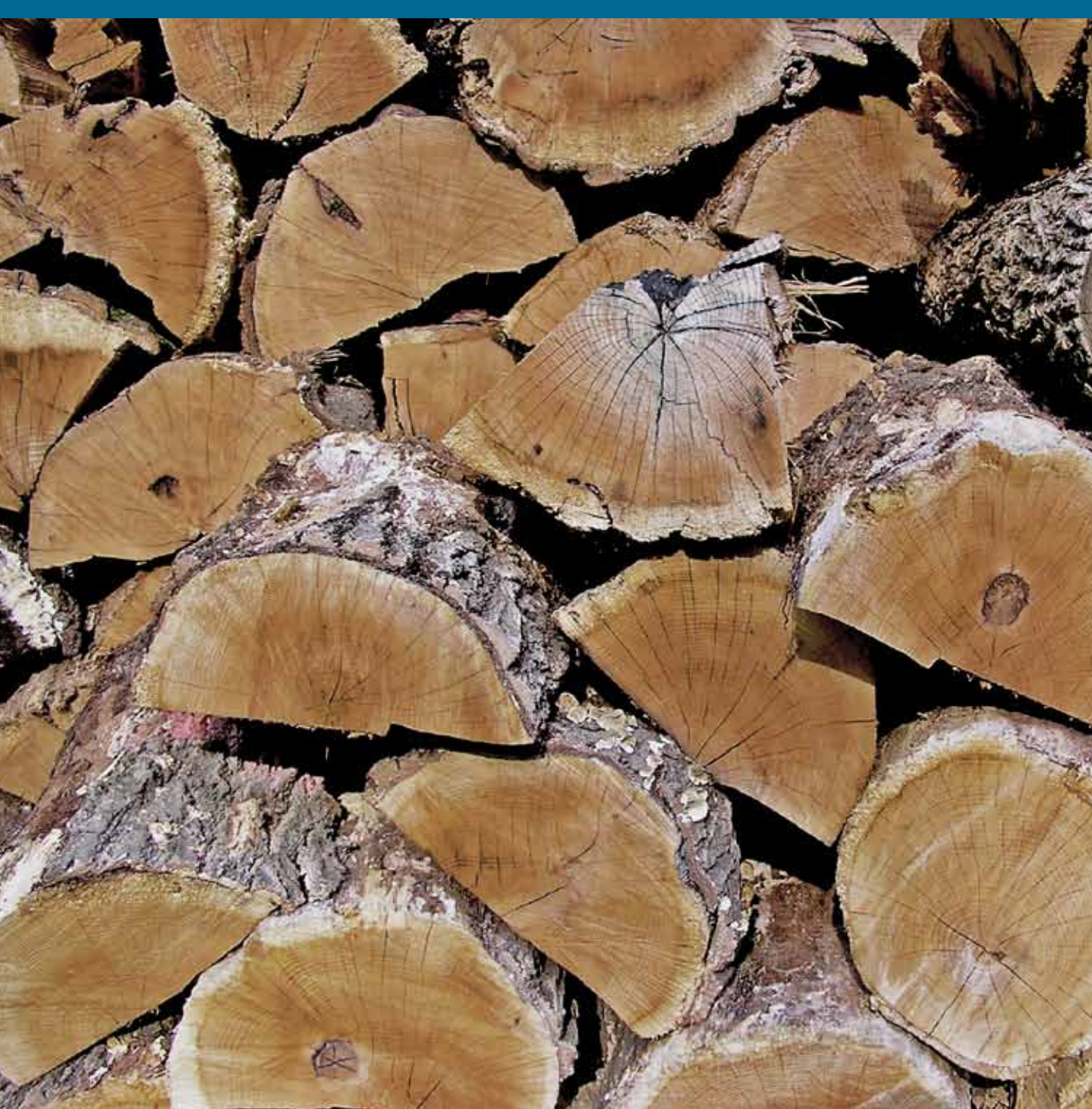


# STOP INVASIVE SPECIES IN YOUR TRACKS.

You Can Make The Difference.



## Firewood

- Emerald ash borer and their eggs and larvae can be moved in firewood.

**You can... use local or certified firewood.**

- Gypsy moths can lay eggs on solid objects like vehicles and RVs.

**You can... clean off equipment before moving to a new site.**

## Bait

- Earthworms and their egg cases can be moved in mud on boots, equipment, and vehicles.

**You can... clean off mud.**

- Earthworms can be introduced when people dump unused bait in lakes or lakeshores.

**You can... throw unused bait in the trash.**

## Gardens

- Some invasive plants, such as buckthorn, have been planted intentionally.

**You can... plant native or non-invasive plants.**

- Some invasive plants outcompete native plants, and quickly take over natural areas.

**You can... remove invasive species.**

## Get Involved

There are many things that you can do to protect our great state's character and quality of life. Preventing new invasions and preventing the spread of existing invasions are top priorities. Get involved and...

- Educate yourself and others.
- Spread the word.
- Join a local eradication program.



**STOP INVASIVE SPECIES  
IN YOUR TRACKS.**

[PlayCleanGo.org](http://PlayCleanGo.org)