

WATCH OUT!

GIVE TEASEL THE BRUSH OFF.



Help Prevent the Spread of Invasive Species

- **REMOVE** plants and mud from boots, gear, pets and vehicles.
- **CLEAN** your gear before entering and leaving the recreation site.
- **STAY** on designated roads and trails.
- **USE CERTIFIED** or local firewood and hay.
- **REPORT** invasive species using the EDDMapS app or on EDDMapS.org.



WATCH OUT!

GIVE TEASEL THE BRUSH OFF.



Help Prevent the Spread of Invasive Species

- **REMOVE** plants and mud from boots, gear, pets and vehicles.
- **CLEAN** your gear before entering and leaving the recreation site.
- **STAY** on designated roads and trails.
- **USE CERTIFIED** or local firewood and hay.
- **REPORT** invasive species using the EDDMapS app or on EDDMapS.org.



WATCH OUT!

GIVE TEASEL THE BRUSH OFF.



Help Prevent the Spread of Invasive Species

- **REMOVE** plants and mud from boots, gear, pets and vehicles.
- **CLEAN** your gear before entering and leaving the recreation site.
- **STAY** on designated roads and trails.
- **USE CERTIFIED** or local firewood and hay.
- **REPORT** invasive species using the EDDMapS app or on EDDMapS.org.



WATCH OUT!

GIVE TEASEL THE BRUSH OFF.



Help Prevent the Spread of Invasive Species

- **REMOVE** plants and mud from boots, gear, pets and vehicles.
- **CLEAN** your gear before entering and leaving the recreation site.
- **STAY** on designated roads and trails.
- **USE CERTIFIED** or local firewood and hay.
- **REPORT** invasive species using the EDDMapS app or on EDDMapS.org.



WHAT TO BRUSH OFF



HOW IT LOOKS FROM THE TRAIL

(Images courtesy Robert Vidéki, Doronicum Kft., John M. Randall, The Nature Conservancy, Steve Hurst, USDA NRCS PLANTS Database, Bugwood.org)

Teasel is an aggressive invasive species that takes over open areas. Just one Teasel plant can get upto 8' tall and produces 3300 seeds! It outcompetes native plants and animals won't eat it because the leaves and stems have spines.

PlayCleanGo.org
STOP INVASIVE SPECIES IN YOUR TRACKS.

WHAT TO BRUSH OFF



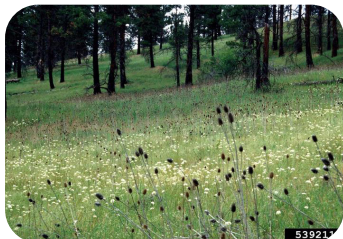
HOW IT LOOKS FROM THE TRAIL

(Images courtesy Robert Vidéki, Doronicum Kft., John M. Randall, The Nature Conservancy, Steve Hurst, USDA NRCS PLANTS Database, Bugwood.org)

Teasel is an aggressive invasive species that takes over open areas. Just one Teasel plant can get upto 8' tall and produces 3300 seeds! It outcompetes native plants and animals won't eat it because the leaves and stems have spines.

PlayCleanGo.org
STOP INVASIVE SPECIES IN YOUR TRACKS.

WHAT TO BRUSH OFF



HOW IT LOOKS FROM THE TRAIL

(Images courtesy Robert Vidéki, Doronicum Kft., John M. Randall, The Nature Conservancy, Steve Hurst, USDA NRCS PLANTS Database, Bugwood.org)

Teasel is an aggressive invasive species that takes over open areas. Just one Teasel plant can get upto 8' tall and produces 3300 seeds! It outcompetes native plants and animals won't eat it because the leaves and stems have spines.

PlayCleanGo.org
STOP INVASIVE SPECIES IN YOUR TRACKS.

WHAT TO BRUSH OFF



HOW IT LOOKS FROM THE TRAIL

(Images courtesy Robert Vidéki, Doronicum Kft., John M. Randall, The Nature Conservancy, Steve Hurst, USDA NRCS PLANTS Database, Bugwood.org)

Teasel is an aggressive invasive species that takes over open areas. Just one Teasel plant can get upto 8' tall and produces 3300 seeds! It outcompetes native plants and animals won't eat it because the leaves and stems have spines.

PlayCleanGo.org
STOP INVASIVE SPECIES IN YOUR TRACKS.